

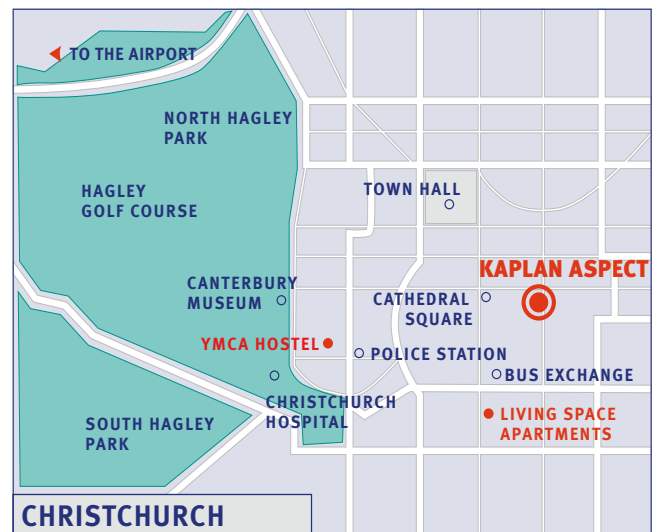
# Student Residence Christchurch

## Living Space

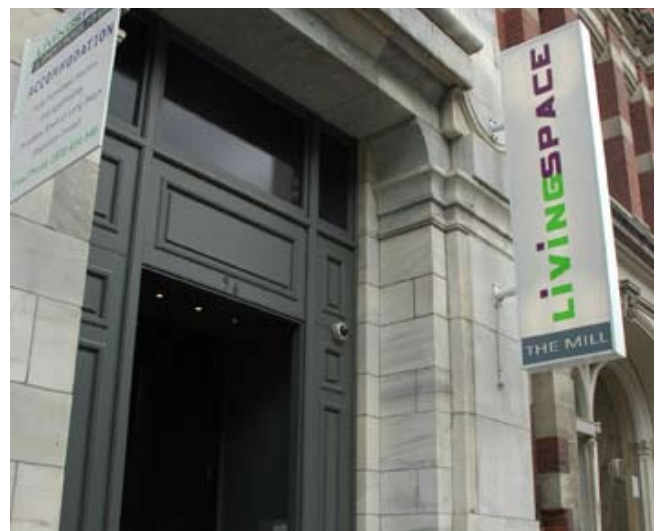
Living Space is a residence in the heart of Christchurch. Conveniently located a few minutes walk from the Kaplan Aspect campus, Living Space offers a high standard of comfortable studio and shared apartments.

This self-catering accommodation offers students the opportunity to meet other students from New Zealand and the rest of the world in a vibrant and relaxed environment.

There is a lounge room on every floor, a movie theatre where students can watch movies and Sky TV, a sport theatre for the big games and a computer suite which is open 24 hours a day. For more information about Living space visit the website: [www.livingspace.net](http://www.livingspace.net).



Living Space  
92 Lichfield Street  
Christchurch  
New Zealand



Living Space Residence

## Student Residence Living Space Christchurch

**KAPLAN** Aspect



Studio bedroom



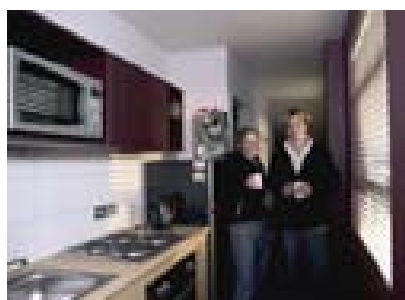
Students in the living area



Outdoor dining area



Living area



Kitchen



Living Space Residence

### Accommodation details

#### Type of accommodation

Students can select either studio rooms, or a 3 - 4 person shared apartment, which includes single bedrooms with shared cooking and bathroom facilities in a unit.

#### Meals and kitchen

Full communal kitchen facilities are on every floor, and each studio unit has a kitchenette containing a fridge, microwave, sink, kettle, toaster, crockery and cutlery.

#### Rooms

With tasteful surroundings, each bedroom consists of a quality double bed, cable TV, a large study desk and chair, desk lamp, wardrobe, telephone voicemail facilities and a high-speed internet connection.

#### Bathrooms

Each bathroom unit has a toilet, shower and basin. These facilities are shared by up to 4 members in the shared unit.

#### Utilities

Electricity, gas and water are included in the accommodation fee. Electrical current is 230 volts AC (50 cycles) and students from some countries may require a transformer and a plug adaptor.

#### Internet and phone

A high-speed internet connection is available in every bedroom. There are two price options available: Either it is charged at \$4 per day for up to 500MB daily usage, and thereafter it is 7c per MB, or it is \$20 per week for up to 500 MB daily usage, and thereafter 7c per MB. Telephones are provided in the rooms. For local calls the first minute is free and thereafter it is 10c per minute. 0800 or 0508 numbers are free of charge. All other calls are charged per minute.

#### Laundry

There is a communal laundry with washers and dryers available. These cost \$2 each. There are also irons and ironing boards.

#### Security and keys

Security is paramount with closed circuit TV, card key and secure off-road parking available for students. 24-hour staffing on duty.

#### Linen and towels

A bed-linen package is provided on arrival including linen, duvet, blanket and pillow. Towels and soap are not provided. It is the students responsibility to launder bed linen and clean their rooms. A cleaning service is available for an extra fee.

#### Deposit

A fully refundable deposit of NZD300 is payable on check-in to cover any charges for telephone and internet use, damage and cleaning charges you incur.

#### Visitors

Visitors are welcome, as are occasional overnight guests (subject to approval by room mates if in an apartment). Please register overnight guests with reception for Health and Safety regulations.

#### Noise and restrictions

Students are requested to be considerate to their neighbours and keep noise levels to a minimum especially in the evenings. Alcohol and smoking are only permitted in certain areas.

#### Availability

Living Space is available all year subject to availability at the time of booking.